



WHIN
STONE
VIEW

CORPORATE PACKAGES

The perfect venue for all your business needs

www.whinstoneview.com



CORPORATE PACKAGES

at Whinstone View

Set in stunning and serene surroundings, Whinstone View provides you and your delegates the ideal location to conduct your corporate business. From small meetings to large scale corporate events and from essential training workshops to awards ceremonies; Whinstone View is the perfect venue for all your corporate needs. We have a relaxed, yet professional approach which will complement any business. Our food is locally sourced using the freshest ingredients. With over 40 years experience, we have the know-how to make your event run smoothly.

For meetings below 30, we offer the first floor private room above the Bistro. The room is tastefully decorated, with its own entrance and toilet facilities. Table layouts are flexible to your needs and can be fully equipped with a projector screen, white board, pens and flip chart. It has numerous electrical sockets, and extension cables are available on request. WiFi is available. There are a number of different dining packages available and it can be booked as half or full day hire.

For larger meetings and conferencing, Wray's Barn at Whinstone View has space for up to 130 delegates. It is a self-contained facility with flexible seating and dining arrangements. It's fully accessible and can be equipped with projector screen, white board, pens and flip chart.

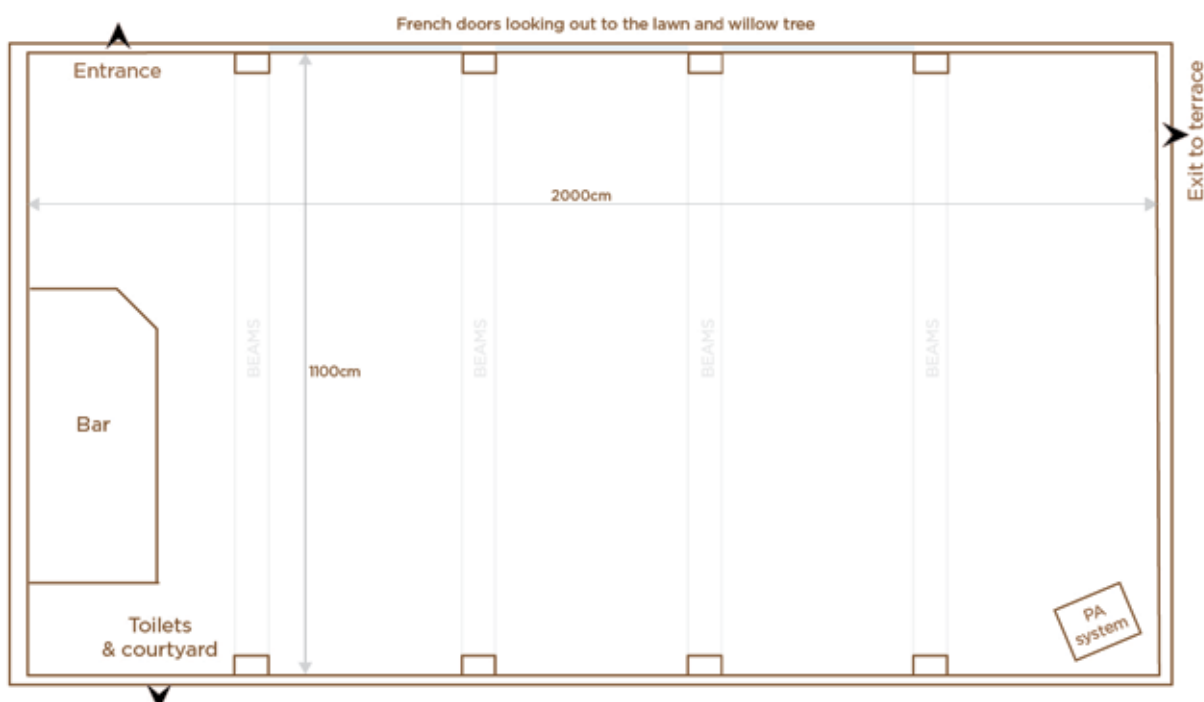
You may want to consider Wray's Barn for the following:

Conferences	Formal Dinners
Training Days	Summer Parties
Seminars	Presentations & Awards Events
Christmas Parties	Team Building Events



WRAY'S BARN

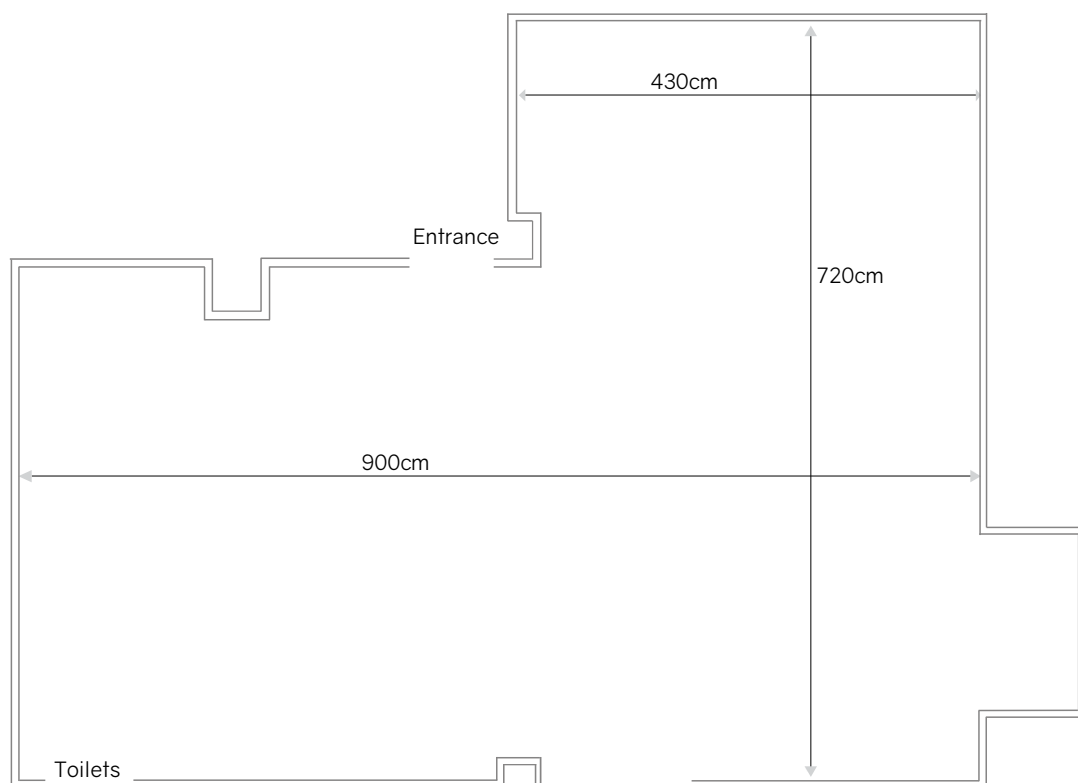
Dimensions	Width 11m	Length 20m
Seating plans available (numbers are capacity)		
U shaped	84 (dining packages available)	
Caberet	105 (dining packages available)	
Full Theatre	144 (refreshments only)	
Banquet Style	126 (dining packages available)	
Theatre with Dining	72 (dining packages available)	





FIRST FLOOR ROOM

Dimensions	Width 9M	Length 7.2m
Seating plans available (numbers are capacity)		
U shaped	30 (dining packages available)	
Full Theatre	40 (refreshments only)	
Banquet Style	20 (dining packages available)	



DAYTIME PACKAGES

1/2 DAY PACKAGE WITH BREAKFAST BUN £14 PP

Bistro (Minimum 15-40 delegates)
Wray's Barn (50-130 delegates)

- Venue hire
- Three servings of Tea or Coffee
- Choice of Breakfast Bun
{sausage | bacon | veggie sausage}
- Bottles of water available through the day
- Use of projector & screen and PA
- Flipcharts

1/2 DAY PACKAGE WITH WORKING LUNCH £18 PP

Bistro (Minimum 15-40 delegates)
Wray's Barn (50-130 delegates)

- Venue hire
- Three servings of Tea or Coffee
- Working Lunch - selection of sandwiches, homemade quiche, fresh fruit salad, selection of homemade cakes. Jug of fruit juice
- Bottles of water available through the day
- Use of projector & screen and PA
- Flipcharts

1/2 DAY PACKAGE WITH BREAKFAST BUN & WORKING LUNCH £21.50 PP

Bistro (Minimum 15-40 delegates)
Wray's Barn (50-130 delegates)

- Venue hire
- Three servings of Tea or Coffee
- Choice of Breakfast Bun
{sausage | bacon | veggie sausage}
- Bottles of water available through the day
- Use of projector & screen and PA
- Flipcharts
- Working Lunch - selection of sandwiches, homemade quiche, fresh fruit salad, selection of homemade cakes. Jug of fruit juice

1/2 DAY PACKAGE WITH HOT LUNCH & DESSERT £24 PP

Bistro (Minimum 15-40 delegates)
Wray's Barn (50-126 delegates)

- Venue hire
- Three servings of Tea or Coffee
- Two course lunch (main & dessert)
- Bottles of water available through the day
- Use of projector & screen and PA
- Flipcharts



EVENING PACKAGES

WELCOME DRINKS

Chilled Italian Bubbles 125ml glass £4.50
Ice Cold Beer (Various) 330ml Bottle £4.50
Wray's Rum Punch
Caribbean aged rum blended with a secret
Blend of fresh fruit & spices £4.50

UPGRADED WELCOME DRINKS

Classic Pimms & Lemonade £5

Served with ice & classic fruit

Blackberry & Elderflower Pimms with Lemonade £5

Served with ice and classic fruit.

Bellini £5.50

Chilled sparkling wine mixed with
Peach schnapps & peach puree

The Hugo £6.50

Gin, Prosecco, elderflower, lime & mint

Chambord Royale £5.50

Prosecco, Chambord & raspberry

START THE PARTY IN STYLE

As everyone is arriving let guests relax on the
terrace with drinks and canapés and enjoy the
natural setting of Whinstone View

Choose Two, Three or Four Canapés

£4pp/£5pp/£6pp

Choose from the following selection:

Local Yorkshire ham & cheddar cheese toasties

Piri Piri prawn skewers

Glazed chicken lollipops

Local rare breed mini sausages

Chunky belly pork fritters

Mozzarella, cherry tomato & basil sticks

Chicken liver parfait & onion chutney tartlet



EVENING PACKAGES

THREE COURSE DINNER £32.50 PER PERSON

STARTERS

Choose one from the following

Soup of your choice (served with crusty bread) (GF bread available)

Field mushroom stuffed with feta, spinach and pine nuts

Duo of melon and pineapple with lemon sorbet and raspberry coulis (v)

Chicken Caesar salad

Goats' cheese and caramelised red onion tartlet (v)

Smoked duck and pear salad

Smooth farmhouse pâté with onion marmalade and toasted brioche (Gf bread available)

MAIN COURSE

CREATE YOUR OWN FROM THE FOLLOWING

Choose one meat option

Grand reserve sirloin of beef & Yorkshire pudding

Rosemary roasted leg of lamb

Grilled supreme of chicken

Choose two vegetables

Chantenay carrots

Broccoli florets

Cauliflower florets

Mange tout

Petit pois

Braised red cabbage

Koffman's cabbage

Fine beans

Honey roast parsnips

Choose one potato option

Garlic & thyme roasted potatoes

Dauphinoise potatoes

Classic duchess potatoes

Minted new potatoes

Choose one gravy/sauce

Red wine gravy

Onion gravy

Forestiere sauce (mushrooms, bacon & shallots)

Mustard sauce

Peppercorn sauce

Diane sauce (shallots, brandy, dijon mustard & mushrooms)

SEASONAL DESSERT CHOICES AVAILABLE ON REQUEST

www.whinstoneview.com



SUMMER PACKAGES

CHOOSE FROM THE FOLLOWING

HOG ROAST BANQUET £22pp

Traditional hog roast supplied by our local farmer Easby Hogs. Hand carved by our chef served with large soft rolls, apple compote, crackling & stuffing.

Accompanied by sides of classic green salad, spicy Mexican style rice, homemade coleslaw, cajun slaw & roasted new potatoes.

Vegetarian Option: Whinstone veggie burger (must be pre-ordered)

BBQ £25pp

Local pork sausages & beef burgers, BBQ marinated chicken, king prawn & red pepper skewers, lamb kofta kebab, homemade coleslaw, cajun slaw, classic green salad, and roasted new potatoes.

Accompanied by a selection of relishes and sauces.

Vegetarian Option: Whinstone veggie burger & sausages (must be pre-ordered)

HAND CARVED BUFFET £25pp

Choose two of the below options

Roast sirloin of beef / honey roast ham / whole dressed salmon

Choose two of the below options

Belly pork fritters / local rare breed sausages/ Piri Piri prawns

Accompanied by roasted new potatoes, green garden salad, waldorf salad, homemade coleslaw, and a selection of bread, pickles & sauces

Vegetarian Option: Whinstone veggie burger (must be pre-ordered)

FARMHOUSE FEAST £25pp

Local pork pie, scotch eggs, homemade cheese & onion quiche, mini spicy sausages, hand carved ham, roasted new potatoes, smooth farmhouse pate, selection of Yorkshire cheeses, bread, crackers and pickled onions.

(Vegetarian option - add field mushroom stuffed with feta, spinach & pine nuts)

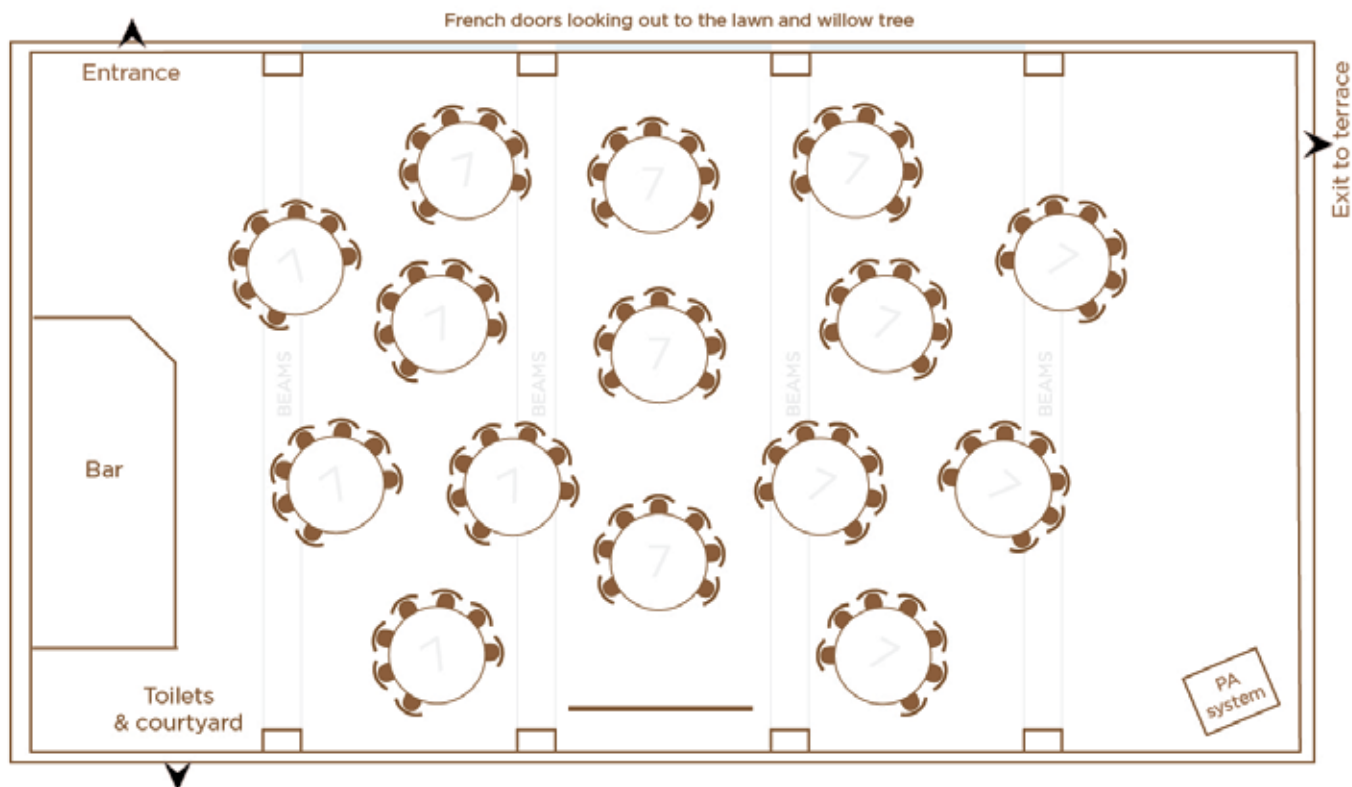
AVAILABLE 7 DAYS A WEEK (after 5pm on Sundays)

www.whinstoneview.com



AWARDS EVENTS

Celebrate your staff and their achievements with an award ceremony at Whinstone View. With a number of different packages available for either a day or evening event. Full PA and sound system are available on request. Below is an example of the barn set up for an awards ceremony 'cabaret' style with all tables facing a focal point.





TEAMBUILDING

Getting the best out of the team that work with you is the key to any successful business.

Whinstone View is fortunate to have a stunning backdrop to offer your staff the location to have teambuilding days. Our friends at AR entertainments offer a full teambuilding package to challenge and motivate your team.

Included in their packages is

- Arrows
- Bomb Disposal
- Group Juggling
- Handcuffs
- Helium Pole
- Keypad
- Lily Pads
- Meteorite Transfer
- Minefield
- Planks and Crates
- Spiders Web
- Swamp Skis

Please contact AR Entertainments directly for more info and prices

01642 712990

<https://arentertainments.co.uk/>

More details and available food / refreshment packages can be discussed by contacting us
info@whinstoneview.com or calling 01642 723285



CHRISTMAS PARTIES

During the Festive period, the Barn is available for private Christmas lunches or evening Christmas parties.

Enjoy a rustic festive celebration with your colleagues.

Lunch packages available for parties of 70 up to 140

Exclusive Private Christmas parties for a minimum of 140 guests.

Call 01642 723285 for more details. Tailored packages available request.



TERMS & CONDITIONS

Provisional Booking

Once you have decided on the date of your event we will make a provisional booking which can be held for one week.

Booking Confirmation

In order to secure your booking we will need written confirmation of your requirements and a non-refundable deposit of £500. Please note a booking will only be provisional until your deposit is received. Should another guest wish to book and confirm the same date as your provisional booking you will be requested to confirm your booking immediately.

Room Hire Charges

On all event bookings there is a room hire charge. This charge covers all that is needed for your event, including fully equipped private barn, 5ft round tables, chairs, dance floor area, extensive outside veranda with table and chairs, all cutlery, crockery and linen table cloths, extensive car parking facilities and disabled access throughout.

Prices are charged at £500 for full day (12pm - onwards) or £250 for half day (5pm onwards.)

Final Payment

Full payment is required 3 weeks before your event is being held.
Not available on Saturdays from April—September.

Last Orders

Last orders will be called at 11.15pm, the bar will close at 11.30pm. The room is to be vacated at midnight and we request all guests leave in an orderly fashion. Due to our rural location it is advisable to pre-order your transport home.

**WHIN
STONE
VIEW**

Whinstone View
Great Ayton
TS9 6QG

TEL: 01642 723285
EMAIL: info@whinstoneview.com

www.whinstoneview.com